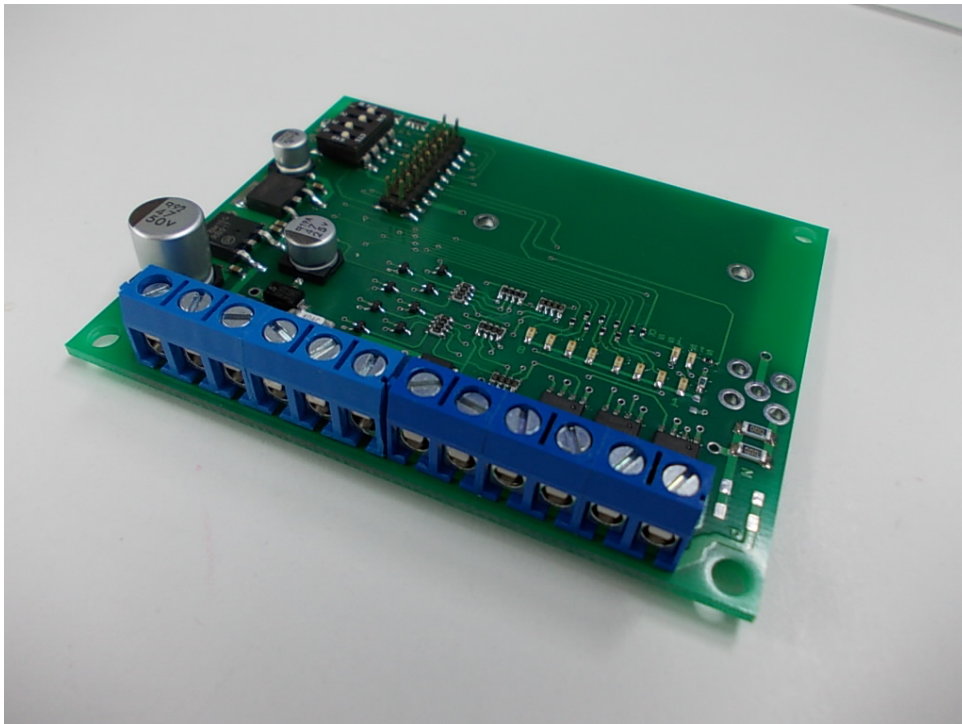


02-8swRXBDS

Specifications



Nomura Engineering Co., Ltd.
Since 1997

Please do not apply this product in a way that its failures and errors may involve human lives..

Nomura Engineering Co., Ltd. URL: <http://www.nomura-e.co.jp/> e-mail: engineer@nomura-e.co.jp

1-7-2 Shibuya, Yamato-city, Kanazawa, 242-0023 Japan TEL : +81-46-244-0041 FAX : +81-46-244-3551

Introduction

02-8sw RXBDS-#

- # : Selectable - - - P (+ B power outlet . It is +B output at the time of ON.)
 - - - N (Open Drain output . It is a ground at the time of ON.)

If a transmitter is turned on output terminal IO1 - IO8 which corresponds becomes active, and LED lights up.
 An output can withstand loads up to 1A. When IO1 - IO8 [two or more] turn on, 2A is not exceeded in total.

5V - 30V can be supplied to power supply B+.

The reverse connection preventive diode and the ignition noise absorption element are contained in the power supply.

Connection of a terminal box

In the case of a screw terminal box, the cable connection to a terminal box should use AWG#22 - #14.

About a DIP switch

sw 4 : PWR SW It is a power switch of a TS02E radio module.

(It turns on and off externally except a module.)

sw 1 ~sw 3 : A channel group, ID registration are set up.

Channel group setting

40 available channels were divided into four groups (each to 10 channels).

Both transmitter and receiver, please set to the same channel group.

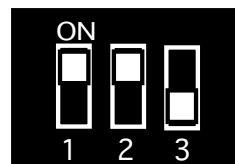
When you use a lot of pairs of transmitters and receivers in the same area, I recommend that you set each pairs to the different channel group.

For example, you set channel group '1' to a pair of transmitter and receiver 'A', and set channel group '2' to 'B', and so on.

How to set channel group

A channel group is set up with a DIP switch.

- 1) channel group'1' : sw1-off , sw2-off , sw3-off
- 2) channel group'2' : sw1-on , sw2-off , sw3-off
- 3) channel group'3' : sw1-off , sw2-on , sw3-off
- 4) channel group'4' : sw1-on , sw2-on , sw3-off



After changing the DIP switch , please switch on a power supply again.

*The DIP switch of the right figure expresses channel group 4.

 Please do not apply this product in a way that its failures and errors may involve human lives..

Nomura Engineering Co., Ltd. URL: <http://www.nomura-e.co.jp/> e-mail: engineer@nomura-e.co.jp

1-7-2 Shibuya, Yamato-city, Kanazawa, 242-0023 Japan TEL : +81-46-244-0041 FAX : +81-46-244-3551

ID registration

The transmitter has an individual ID. When you register to the receiver the ID of the transmitter, remote control is possible.

The receiver can register ID(up to 30).

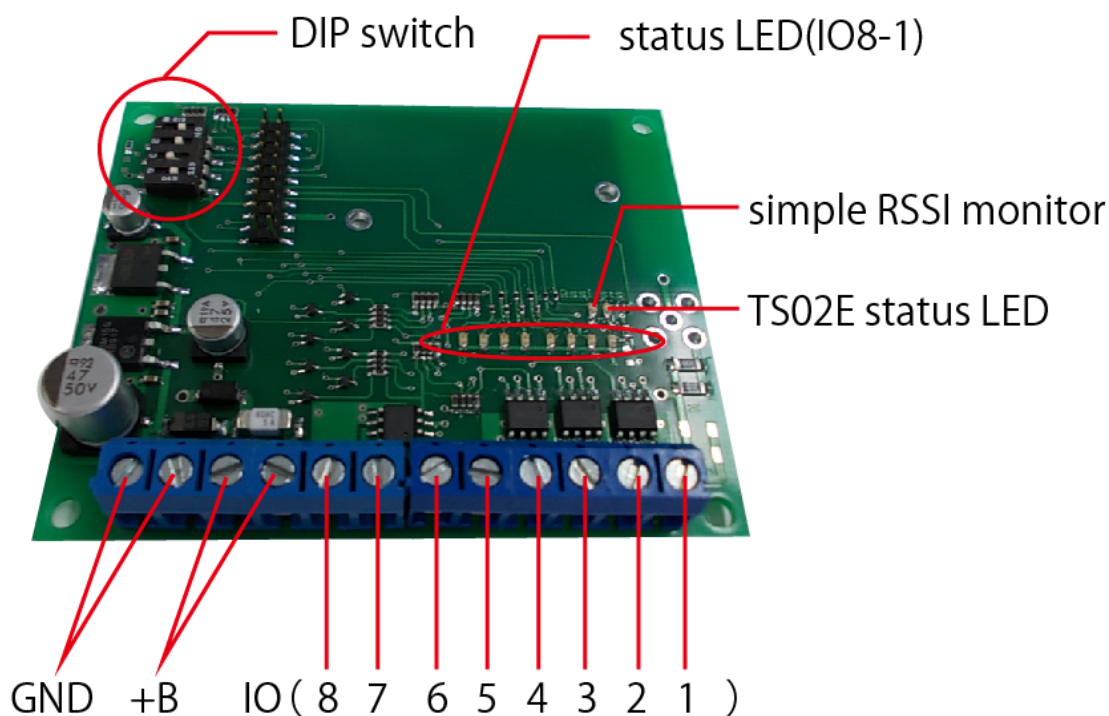
How to registrar ID

- 1) Set to the same channel group both transmitter and receiver.
- 2) Sw1/2/3 of the DIP switch is the 'ON' position.
- 3) Turn on the power.
- 4) Watch for the status LED to flicker.
- 5) Send a signal of the transmitter.
- 6) Receiver receives a signal, status LED blinks.
- 7) Registration is complete when you change to the 'OFF' position sw3 of the DIP switch.
- 8) Turn on the power and use it.

*If you want to delete ID data , set sw1/2/3 of a DIP switch as the position of "ON", and turn on the power.

Then you set sw3 as the position of "OFF".

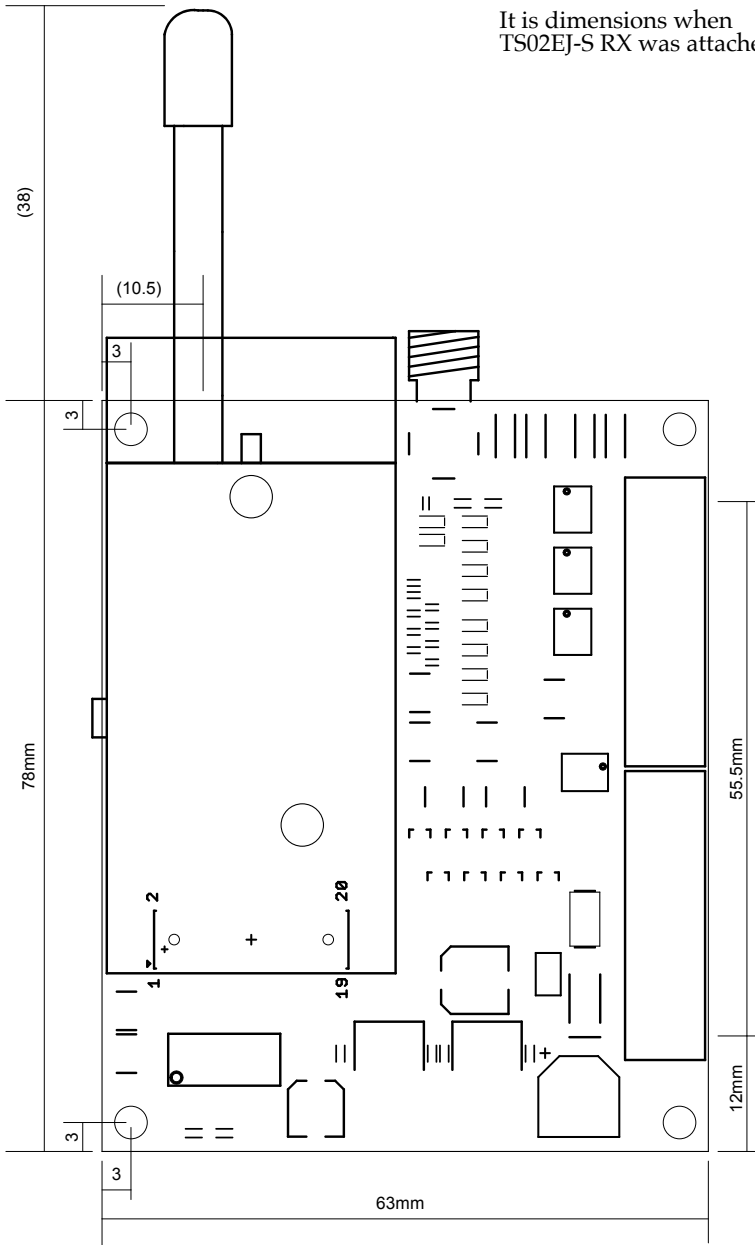
All ID data is deleted.



Please do not apply this product in a way that its failures and errors may involve human lives..

Nomura Engineering Co., Ltd. URL: <http://www.nomura-e.co.jp/> e-mail: engineer@nomura-e.co.jp

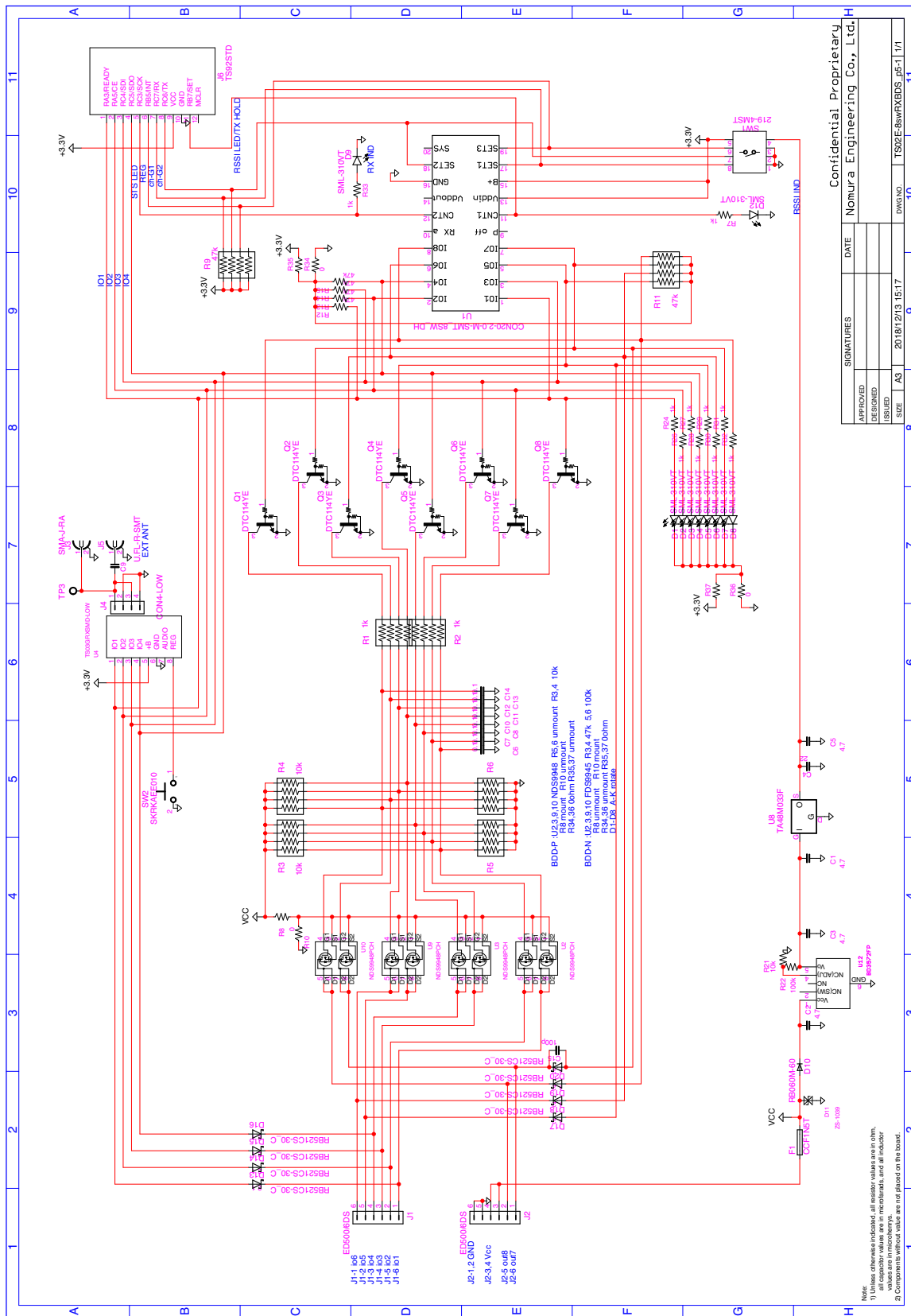
1-7-2 Shibuya, Yamato-city, Kanazawa, 242-0023 Japan TEL : +81-46-244-0041 FAX : +81-46-244-3551



Please do not apply this product in a way that its failures and errors may involve human lives..

Nomura Engineering Co., Ltd. URL: <http://www.nomura-e.co.jp/> e-mail: engineer@nomura-e.co.jp

1-7-2 Shibuya, Yamato-city, Kanazawa, 242-0023 Japan TEL : +81-46-244-0041 FAX : +81-46-244-3551



Please do not apply this product in a way that its failures and errors may involve human lives..
Nomura Engineering Co., Ltd. URL: <http://www.nomura-e.co.jp/> e-mail: engineer@nomura-e.co.jp

1-7-2 Shibuya, Yamato-city, Kanazawa, 242-0023 Japan TEL : +81-46-244-0041 FAX : +81-46-244-3551