

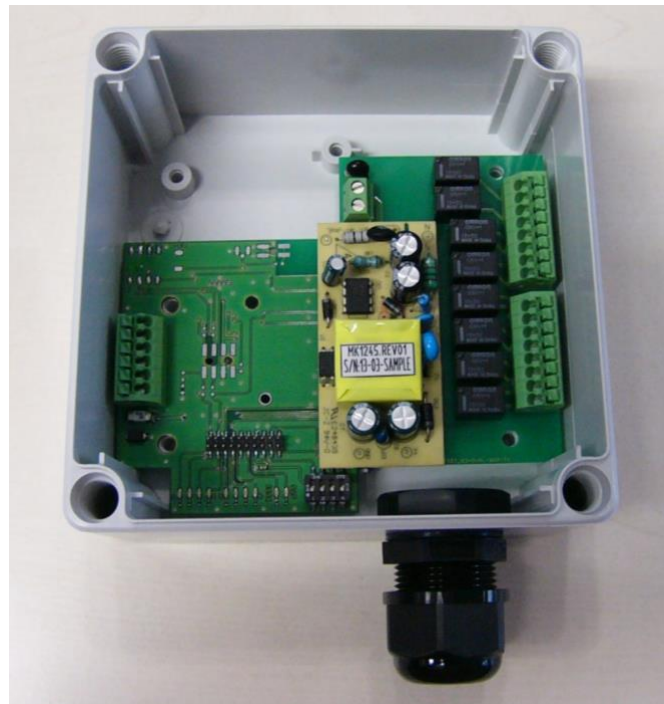


TS03/TS02/TS92 4sw/8swRX-RL-NWP

TS03,TS02,TS92

4sw/8swRX-RL-NWP

Waterproof Relay Output Receiver



Nomura Engineering Co., Ltd.
Since 1997

Please do not use this product in a way that its failures and errors may involve human lives.

Nomura Engineering Co.,Ltd. <http://www.nomura-e.co.jp> e-mail:info@nomura-e.co.jp
1-7-2 Shibuya, Yamato-city, Kanagawa, 242-0023, Japan
TEL:+81-46-244-0041 FAX:+81-46-244-3551



TS03/TS02/TS92 4sw/8swRX-RL-NWP

1. INTRODUCTION	3
2. FUNCTION	4
3. HOW TO SET CHANNEL GROUP	5
4. ID REGISTRATION	5
4-1. HOW TO REGISTRAR ID	5
5. CIRCUIT DIAGRAM.....	6
6. BOARD SIZE.....	7
7-1. CASE SIZE	8
7-2. CASE SIZE (FOR EXTERNAL ANTENNA)	9

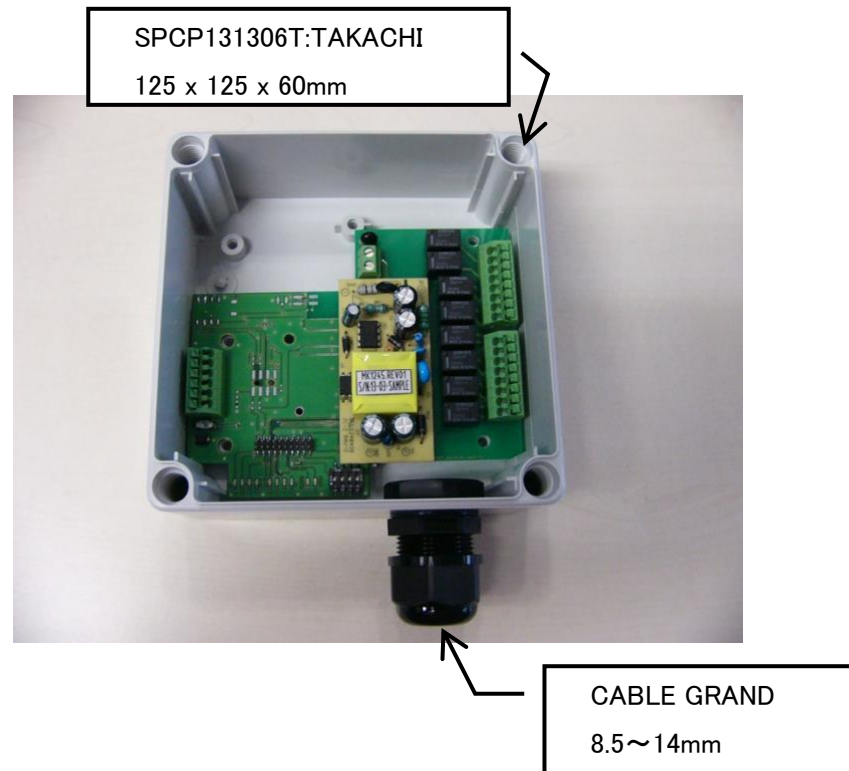
Please do not use this product in a way that its failures and errors may involve human lives.

Nomura Engineering Co.,Ltd. <http://www.nomura-e.co.jp> e-mail:info@nomura-e.co.jp
1-7-2 Shibuya, Yamato-city, Kanagawa, 242-0023, Japan
TEL:+81-46-244-0041 FAX:+81-46-244-3551

TS03/TS02/TS92 4sw/8swRX-RL-NWP

1. Introduction

This is a 4CH or 8CH relay board compatible with our specified low power wireless module, 315MHz band TS03, 429MHz band TS02EJ, and 920MHz band TS92.



xx-4sw/8swRx-RL-#-NWP (-EXT)

xx : module select.....03 : TS03 , 02 : TS02EJ ,
 92 : TS92

(8sw for TS02EJ only, 4sw for others)

: power select : AC ••• AC100V
 : DC5V ••• DC5V
 : DC12V ••• DC12V
 : DC24V ••• DC24V

* Compatible with external antennas. Please contact us.

(-EXT)

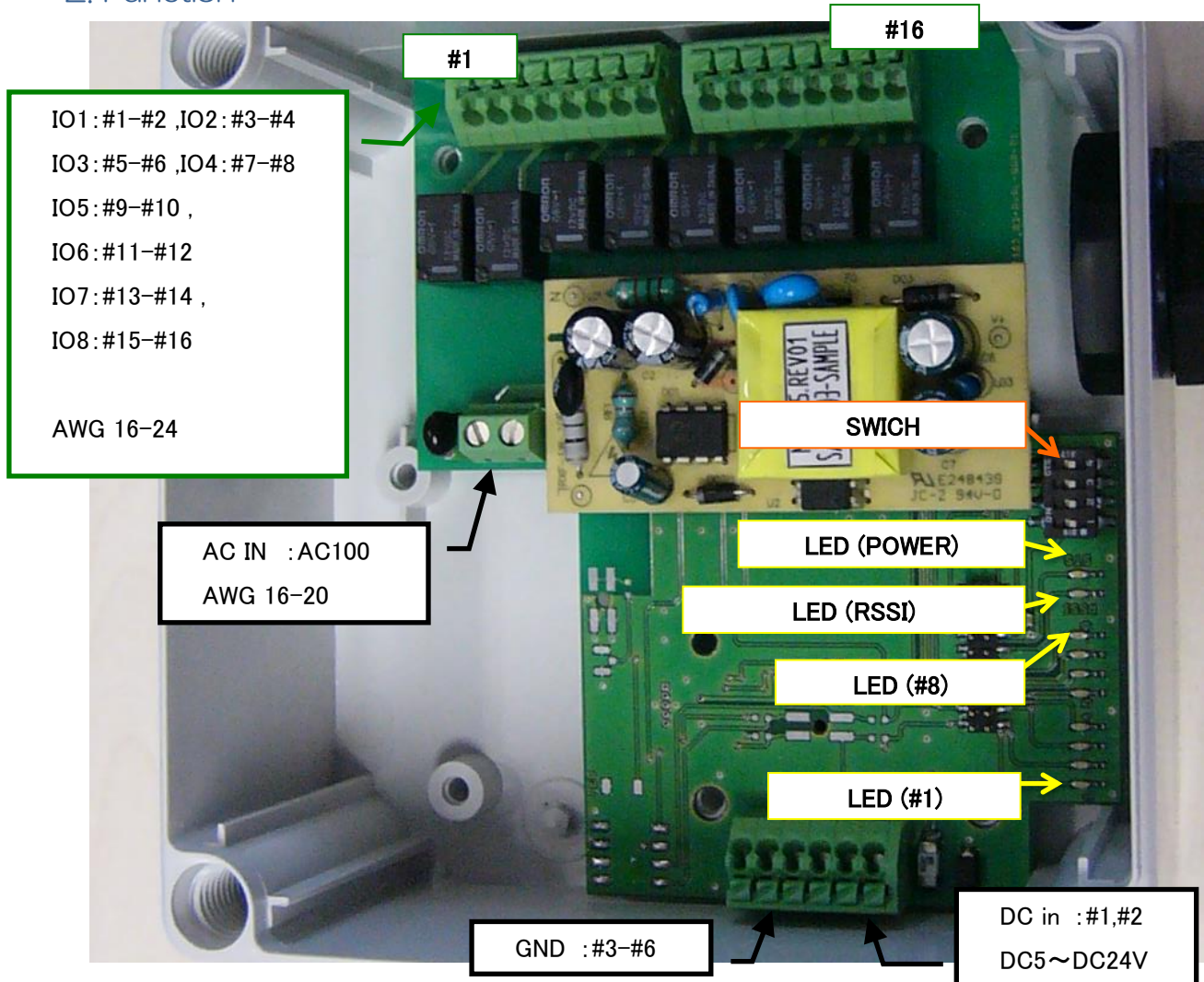
*Please choose from two types of lids: clear and white gray.

Please do not use this product in a way that its failures and errors may involve human lives.

Nomura Engineering Co.,Ltd. <http://www.nomura-e.co.jp> e-mail:info@nomura-e.co.jp
 1-7-2 Shibuya, Yamato-city, Kanagawa, 242-0023, Japan
 TEL:+81-46-244-0041 FAX:+81-46-244-3551

TS03/TS02/TS92 4sw/8swRX-RL-NWP

2. Function



- Supply voltage : AC IN AC100V
: DC IN DC5V / DC12V / DC24V
- Supply current : 300mA max (All output ON, No load)
- output relay : A contact (normally open contact)
B contact (normally closed contact)
* A contact and B contact can be switched with a solder jumper.
Relay Omron G5V-1 AC125V/0.5A DC24V/1A
Secure a sufficient margin for inductive loads.
- LED : RSSI... Lit: Good, Blinking: Close to RX sensitivity, Off: Bad
* LED (power, RSSI) is for TS02E and TS92 (TS03 is not used).

Please do not use this product in a way that its failures and errors may involve human lives.

Nomura Engineering Co.,Ltd. <http://www.nomura-e.co.jp> e-mail:info@nomura-e.co.jp
 1-7-2 Shibuya, Yamato-city, Kanagawa, 242-0023, Japan
 TEL:+81-46-244-0041 FAX:+81-46-244-3551

TS03/TS02/TS92 4sw/8swRX-RL-NWP

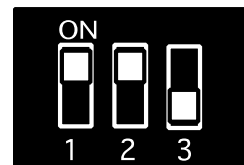
3. How to set channel group

A channel group is set up with a DIP switch. (TS03 not used)

Channel group number	DIP switch #1	DIP switch #2
1	OFF	OFF
2	ON	OFF
3	OFF	ON
4	ON	ON

After changing the DIP switch , please switch on a power supply again.

*The DIP switch of the right figure expresses channel group 4.



4. ID registration

The transmitter has an individual ID. When you register to the receiver the ID of the transmitter, remote control is possible.

The receiver can register ID up to 100.

4-1. How to registrar ID

- 1) Set to the same channel group both transmitter and receiver.
- 2) Sw1/2/3 of the DIP switch is the 'ON' position.
- 3) Turn on the power.
- 4) Watch for the status LED to flicker.
- 5) Send a signal of the transmitter.
- 6) Receiver receives a signal, status LED blinks.
- 7) Registration is complete when you change to the 'OFF' position sw3 of the DIP switch.
- 8) Turn on the power and use it.

*If you want to delete ID data , set sw1/2/3 of a DIP switch as the position of "ON", and turn on the power. Then you set sw3 as the position of "OFF".

All ID data is deleted.

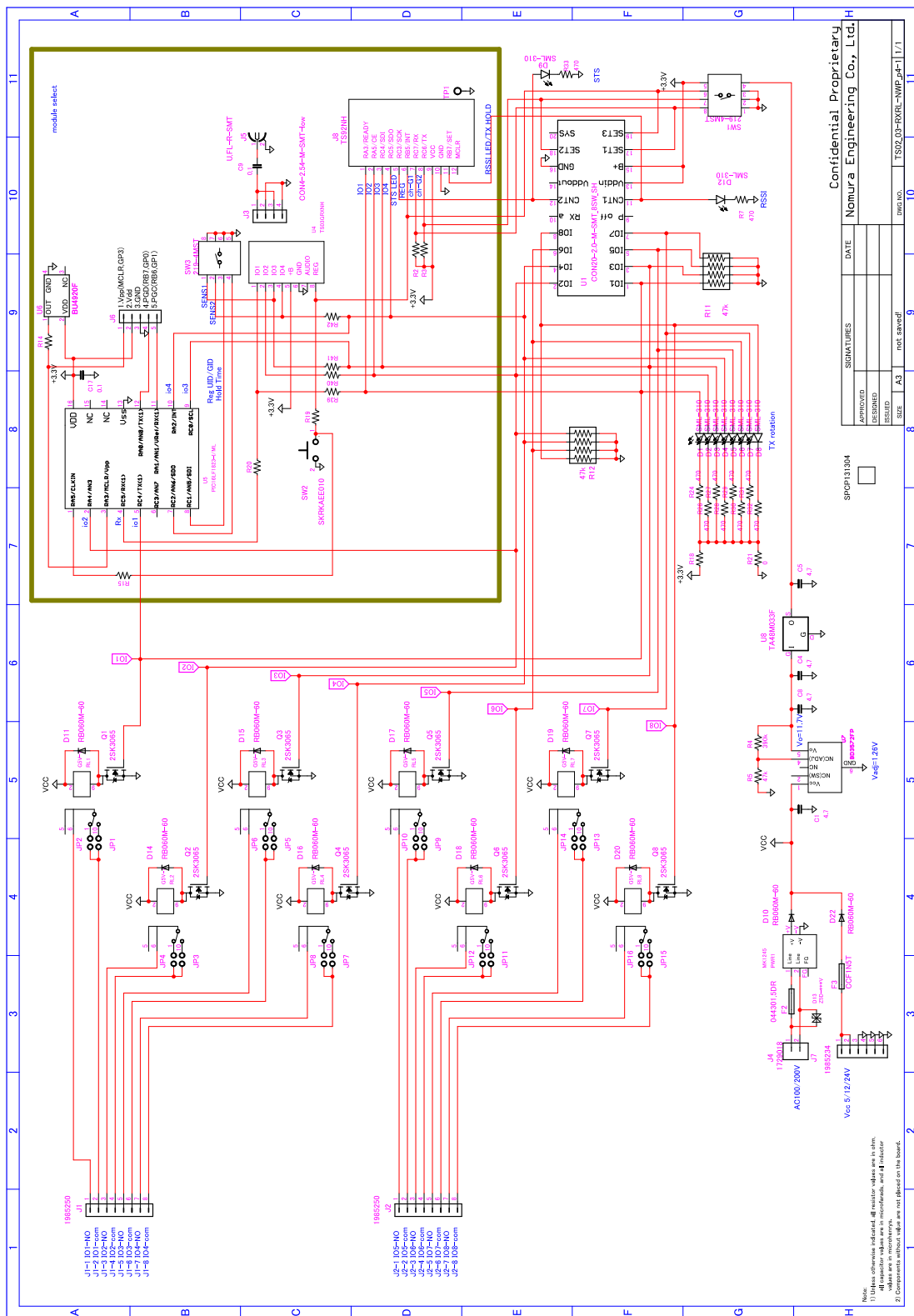
Please do not use this product in a way that its failures and errors may involve human lives.

Nomura Engineering Co.,Ltd. <http://www.nomura-e.co.jp> e-mail:info@nomura-e.co.jp
 1-7-2 Shibuya, Yamato-city, Kanagawa, 242-0023, Japan
 TEL:+81-46-244-0041 FAX:+81-46-244-3551



TS03/TS02/TS92 4sw/8swRX-RL-NWP

5. Circuit diagram



APPROVED	SIGNATURES	DATE
DESIGNED		
CHECKED		
SIZE	A3	not saved

SP03P131004

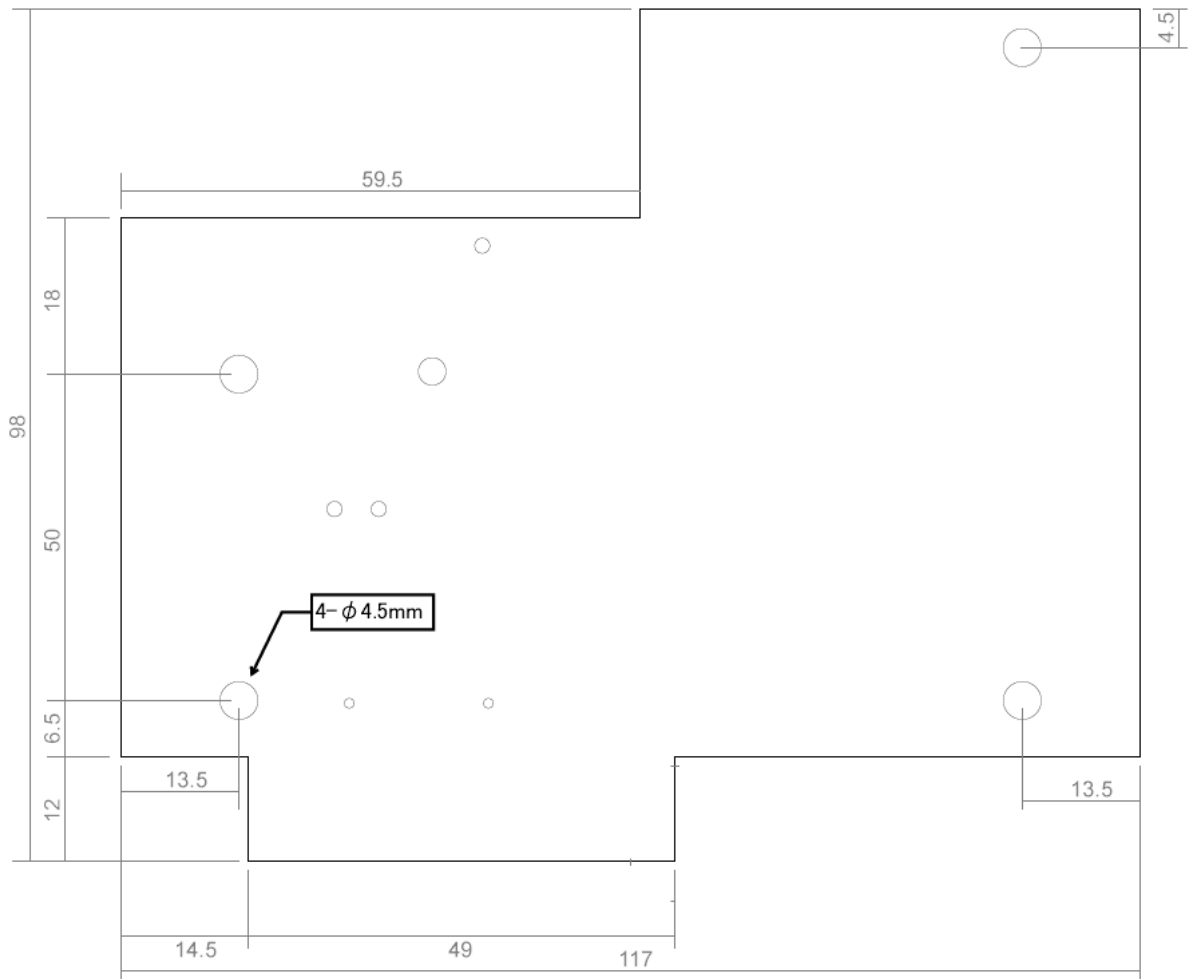
TS02_03-RXRL-NWP_P8-11/1

Please do not use this product in a way that its failures and errors may involve human lives.
 Nomura Engineering Co.,Ltd. <http://www.nomura-e.co.jp> e-mail:info@nomura-e.co.jp
 1-7-2 Shibuya, Yamato-city, Kanagawa, 242-0023, Japan
 TEL:+81-46-244-0041 FAX:+81-46-244-3551



TS03/TS02/TS92 4sw/8swRX-RL-NWP

6. Board size



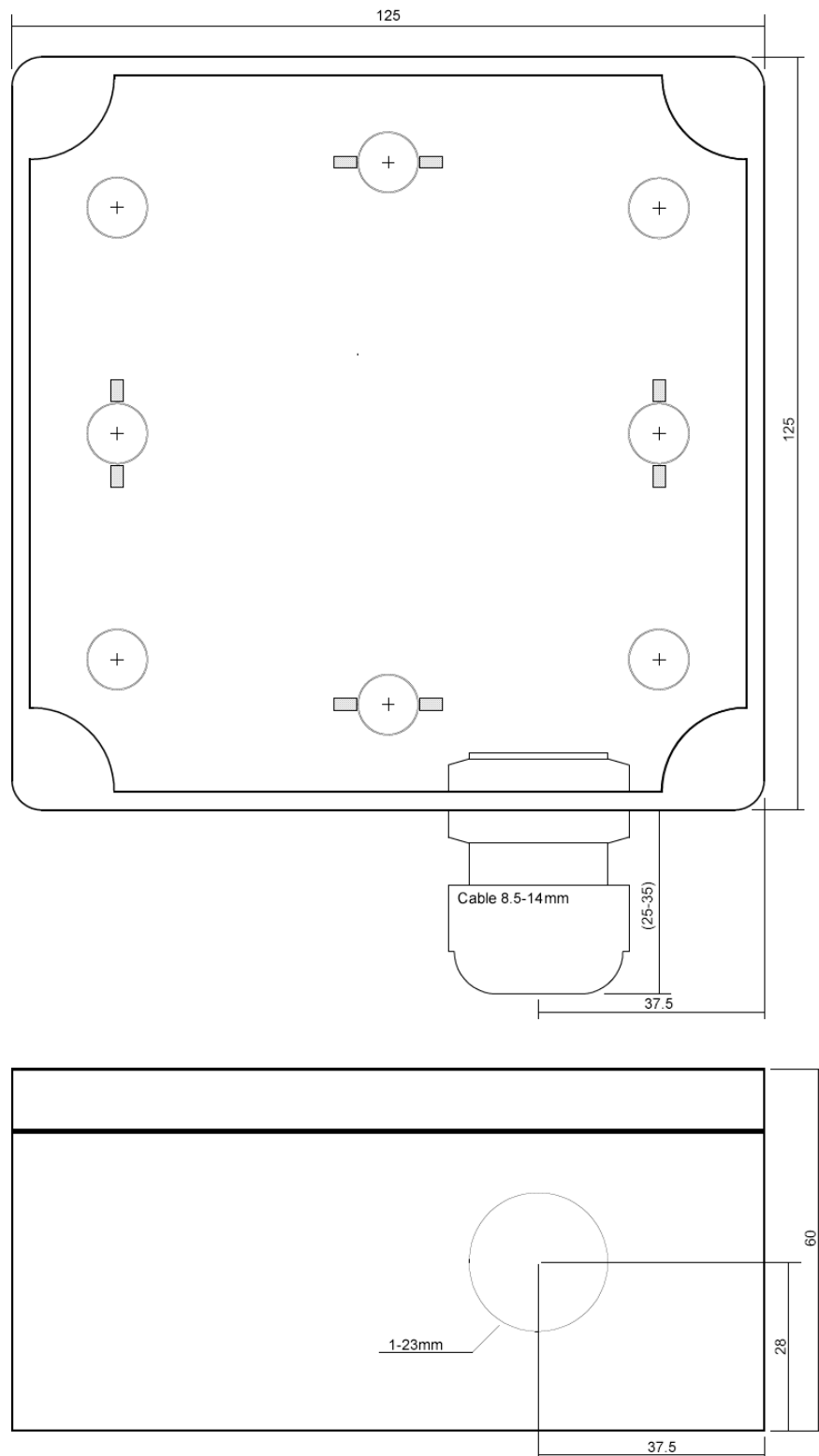
Please do not use this product in a way that its failures and errors may involve human lives.

Nomura Engineering Co.,Ltd. <http://www.nomura-e.co.jp> e-mail:info@nomura-e.co.jp
1-7-2 Shibuya, Yamato-city, Kanagawa, 242-0023, Japan
TEL:+81-46-244-0041 FAX:+81-46-244-3551



TS03/TS02/TS92 4sw/8swRX-RL-NWP

7-1. Case size

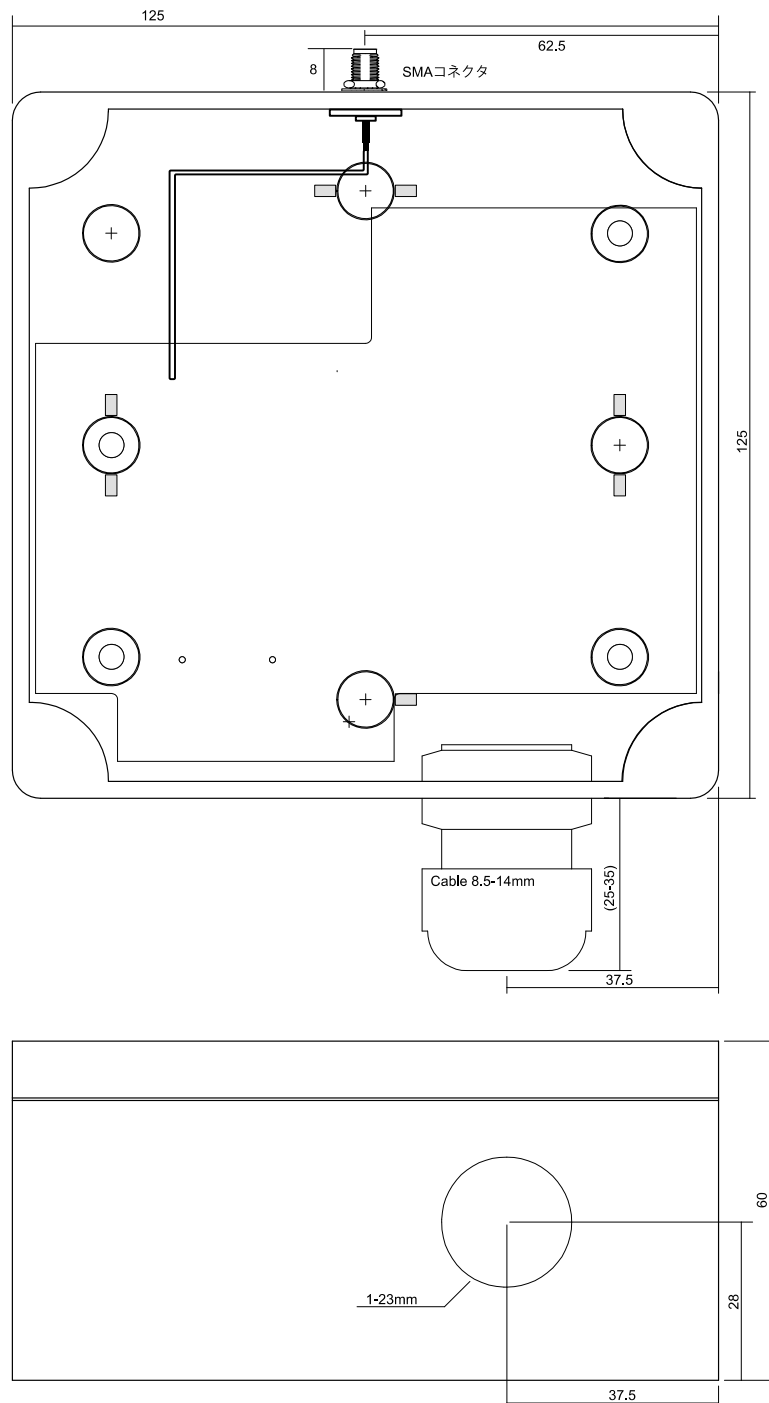


Please do not use this product in a way that its failures and errors may involve human lives.

Nomura Engineering Co.,Ltd. <http://www.nomura-e.co.jp> e-mail:info@nomura-e.co.jp
1-7-2 Shibuya, Yamato-city, Kanagawa, 242-0023, Japan
TEL:+81-46-244-0041 FAX:+81-46-244-3551

TS03/TS02/TS92 4sw/8swRX-RL-NWP

7-2. Case size (for external antenna)



Please do not use this product in a way that its failures and errors may involve human lives.
 Nomura Engineering Co.,Ltd. <http://www.nomura-e.co.jp> e-mail:info@nomura-e.co.jp
 1-7-2 Shibuya, Yamato-city, Kanagawa, 242-0023, Japan
 TEL:+81-46-244-0041 FAX:+81-46-244-3551